



98871 Binocular Phoropter Kit



98872 Handheld Desk Kit



98870 Single Phoropter Kit

Key Benefits

- Documents glare disability without leaving refracting lane
Allows examiner to test at the phoropter with best corrected vision.

- Three levels for glare testing
Switch easily between intensity settings

I	: 1200 - 1650 lux
II	: 1750 - 2150 lux
III	: 3300 - 3750 lux

- Patented LED array
Designed to simulate glare from oncoming headlights

- Tests night vision
Poor visual acuity while driving at night is a key complaint of cataract patients

- Standard procedure makes testing accurate and reproducible
Allows documenting results with minimal training

- Offers binocular glare testing option
Models include binocular and single eye units for manual phoropters and a handheld version

- Easy to install and use
Versatile mounting bracket, handle and base allows the EpiGlare® to adapt to practice workflow

- Long battery life
All devices offer over 9 hours run time per charge; eliminating the need to use valuable lane charging wells and handles

- Smart power level feature
Power indicator light ensures every test is at the right power level

Documents glare disability efficiently

Cataracts are known to cause reduced vision and disabling glare. This is particularly significant for older patients driving an automobile at night. Lack of adequate documentation of this visual impairment in patients with cataracts may result in denial for coverage of cataract surgery from Medicare and private insurance companies. While many methods of glare documentation suffer from inconsistent light intensity and angle, the EpiGlare® offers a standardized repeatable approach to measuring and documenting glare disability with best corrected vision.

For more information visit glaretester.com

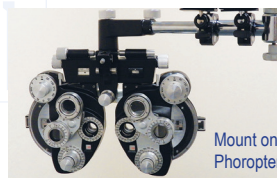
EpiGlare® Packages

The EpiGlare® eye piece can be removed from the handheld desk kit and placed in the phoropter: no additional attachment is necessary.



EpiGlare Testing Unit

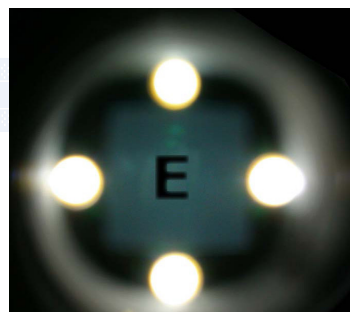
Single Phoropter Kit 1 testing unit, 1 phoropter bracket, 2 batteries, 1 wall charger	98870
Binocular Phoropter Kit 2 testing units, 2 phoropter brackets, 4 batteries, 2 wall chargers	98871
Handheld Desk Kit 1 testing unit, 1 handle/stand, 2 batteries, 1 wall charger	98872
Battery and Charger Kit 2 batteries, 1 wall charger	98873
Extra Phoropter Bracket	98874
Replacement Handle and Stand (for handheld kit)	98875



Mount on Phoropter



Mount on Table



Patient view at Phoropter

OPTEGO VISION USA
4525 South Coach Dr
Tucson, AZ 85714
Phone 866-678-6723
Fax 520-209-1586
email@optego.com
www.optegousa.com

OPTEGO VISION
SINGAPORE
60 Paya Lebar Rd #11-33
Paya Lebar Square
Singapore 409051
Phone +65 6742 5940
asia@optego.com
www.optego.com.sg

