

# Phake-i® Surgical Practice Eye

*Practice when you want .....  
with this substitute for animal eyes!*



The Phake-i® is a patented surgical practice eye designed to improve surgical skills. Modeled after the human eye, the Phake-i® is dimensionally correct and approximates the shape, size and feel of the human eye.

The Phake-i® has the following features:

- Central corneal thickness of 0.5 mm
- Peripheral corneal thickness of 0.8 mm
- Corneal diameter of 12 mm
- Pupil: 4 mm pupil or standard dilated 8 mm
- Lens: anterior capsular thickness of 0.0004"
- The lens material consists of a central solid core and a softer cortex suitable for hydrodelineation, chopping, phaco-emulsification and irrigation/aspiration
- Realistic feel of an incision
- Suitable for stainless steel or diamond knives and other instruments
- Non-toxic, fully recyclable

## Phake-i® Surgical Practice Eye

4 mm Phake-i® practice eyes, 4/pack	17010
8 mm Phake-i® practice eyes, 4/pack	17004



## Phake-i® Face Form

17105



The Phake-i® is ideal for practicing key ophthalmic surgical procedures:

- Repair of corneal and scleral lacerations
- Corneal incisions and suturing
- Scleral flaps and scleral tunnels
- Intravitreal injections
- Capsulorrhexis
- Phaco-emulsification
- IOL (PC-AC) implants/explants
- Capsular Tension Rings
- Iris expanders/hooks
- Limbal Relaxing Incisions (LRI)
- Penetrating Keratoplasty

The Phake-i® used for surgical training, allows multiple different procedures to be performed on the same eye. However, a capsulotomy and phaco-emulsification can only be performed once.

The Phake-i® can be easily paired with the Phake-i Face Form to create a real life-like surgical environment.

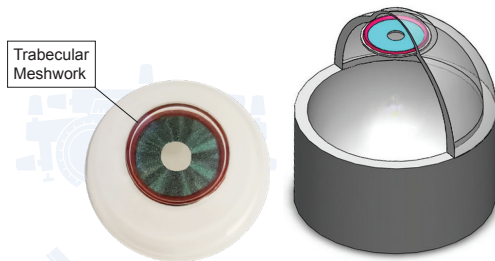


For demonstration video visit: [phake-i.com](http://phake-i.com)

OPTEGO VISION USA  
4525 South Coach Dr  
Tucson, AZ 85714  
Phone 866-678-6723  
Fax 520-209-1586  
email@optego.com  
www.optegousa.com

OPTEGO VISION  
SINGAPORE  
60 Paya Lebar Rd #11-33  
Paya Lebar Square  
Singapore 409051  
Phone +65 6742 5940  
asia@optego.com  
www.optego.com.sg





The Phake-i® Trabecular Meshwork Model was designed to practice meshwork implantations. The Trabecular Meshwork Model has all the characteristics of the standard Phake-i® practice eye, except for the lens. The drawing shows a cut-away section of the Phake-i® with a blue iris and a pink trabecular meshwork.

Each Surgical Training System contains:

- Phake-i® face form with 1 gallon container and 3 ft. vinyl tubing
- 12 Phake-i standard practice eyes: three 4 packs
- Black carrying case